

### Product Information

**Size:**

100ul

**Reactivity:**

Human

**Source:**

Rabbit

**Isotype:**

IgG

**Applications:**

ELISA, IHC, IF

**Recommended dilutions:**

ELISA:1:2000-1:10000, IHC:1:50-1:100,  
IF:1:100-1:500

**Protein Background:**

Type V collagen is a member of group I collagen (fibrillar forming collagen). It is a minor connective tissue component of nearly ubiquitous distribution. Type V collagen binds to DNA, heparan sulfate, thrombospondin, heparin, and insulin. Type V collagen is a key determinant in the assembly of tissue-specific matrices By similarity.

**Gene ID:**

COL5A2

**Uniprot**

P05997

**Synonyms:**

Collagen alpha-2(V) chain ; CO5A2;

**Immunogen:**

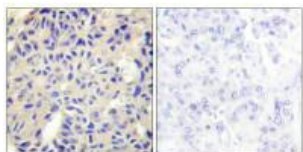
Synthesized peptide derived from internal of human Collagen V alpha 2.

**Storage:**

Rabbit IgG in phosphate buffered saline (without Mg<sup>2+</sup> and Ca<sup>2+</sup>), pH 7.4, 150mM NaCl, 0.02% sodium azide and 50% glycerol.

## Product Images

---



Immunohistochemistry analysis of paraffin-embedded human breast carcinoma tissue using Collagen V alpha 2 antibody.



Immunofluorescence analysis of HepG2 cells, using Collagen V alpha 2 antibody.