

COL6A3 Antibody



PACO23316

Product Information

Size:

100ul

Reactivity:

Human, Mouse

Source:

Rabbit

Isotype:

IgG

Applications:

ELISA, IHC, IF

Recommended dilutions:

ELISA:1:2000-1:10000, IHC:1:50-1:100,
IF:1:100-1:500

Protein Background:

Collagen VI acts as a cell-binding protein.

Gene ID:

COL6A3

Uniprot

P12111

Synonyms:

Collagen alpha-3(VI) chain; CO6A3;

Immunogen:

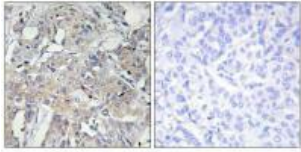
Synthesized peptide derived from internal of human Collagen VI alpha 3.

Storage:

Rabbit IgG in phosphate buffered saline (without Mg²⁺ and Ca²⁺), pH 7.4, 150mM NaCl, 0.02% sodium azide and 50% glycerol.

Product Images

Immunohistochemistry analysis of paraffin-embedded human breast carcinoma tissue using Collagen VI alpha 3 antibody.



Immunofluorescence analysis of HeLa cells, using Collagen VI alpha 3 antibody.

