

COX7A2P2 Antibody



PACO23325

Product Information

Size:

100ul

Reactivity:

Human, Mouse, Rat

Source:

Rabbit

Isotype:

IgG

Applications:

ELISA, WB, IHC

Recommended dilutions:

ELISA:1:2000-1:10000, WB:1:500-1:3000,
IHC:1:50-1:100

Protein Background:**Gene ID:**

COX7A2P2

Uniprot

O60397

Synonyms:

Cytochrome c oxidase subunit VIIa 3; mitochondrial [Precursor]; COX7AP2; COX7A3;
COX7AL2

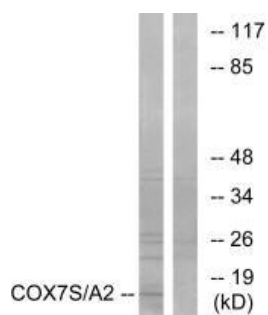
Immunogen:

Synthesized peptide derived from internal of human COX7S/A2.

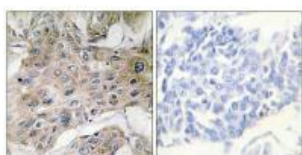
Storage:

Rabbit IgG in phosphate buffered saline (without Mg²⁺ and Ca²⁺), pH 7.4, 150mM
NaCl, 0.02% sodium azide and 50% glycerol.

Product Images



Western blot analysis of extracts from rat heart cells, using COX7S/A2 antibody.



Immunohistochemistry analysis of paraffin-embedded human breast carcinoma tissue using COX7S/A2 antibody.