

Product Information

Size:

100ul

Reactivity:

Human

Source:

Rabbit

Isotype:

IgG

Applications:

ELISA, WB, IHC

Recommended dilutions:

ELISA:1:2000-1:10000, WB:1:500-1:3000,
IHC:1:50-1:100

Protein Background:

Cytochromes P450 are a group of heme-thiolate monooxygenases. In liver microsomes, this enzyme is involved in an NADPH-dependent electron transport pathway. It oxidizes a variety of structurally unrelated compounds, including steroids, fatty acids, and xenobiotics. In the epoxidation of arachidonic acid it generates only 14,15- and 11,12-cis-epoxyeicosatrienoic acids. It is the principal enzyme responsible for the metabolism the anti-cancer drug paclitaxel (taxol).

Gene ID:

CYP2C8

Uniprot

P10632

Synonyms:

Cytochrome P450 2C8; EC 1.14.14.1; CYP11C8; P450 form 1; P450 MP-12/MP-20

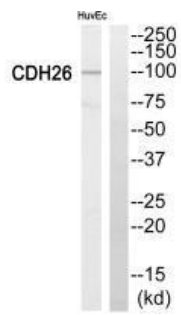
Immunogen:

Synthesized peptide derived from internal of human Cytochrome P450 2C8.

Storage:

Rabbit IgG in phosphate buffered saline (without Mg²⁺ and Ca²⁺), pH 7.4, 150mM NaCl, 0.02% sodium azide and 50% glycerol.

Product Images



Western blot analysis of extracts from HuvEc cells, using Cytochrome P450 2C8 antibody.

Immunohistochemistry analysis of paraffin-embedded human testis tissue, using Cytochrome P450 2C8 antibody.

