

---

## Product Information

**Size:**

100ul

**Reactivity:**

Human

**Source:**

Rabbit

**Isotype:**

IgG

**Applications:**

ELISA, WB, IHC

**Recommended dilutions:**

ELISA:1:2000-1:10000, WB:1:500-1:3000,  
IHC:1:50-1:100

**Protein Background:**

a member of the cytochrome P450 superfamily of enzymes. The cytochrome P450 proteins are monooxygenases which catalyze many reactions involved in drug metabolism and synthesis of cholesterol, steroids and other lipids. The expression pattern of a similar rat protein suggests that this protein may be involved in neurovascular function in the brain.

**Gene ID:**

CYP4X1

**Uniprot**

Q8N118

**Synonyms:**

CP4X1; CYPIVX1; Cytochrome P450 4X1; EC 1.14.14.1;

**Immunogen:**

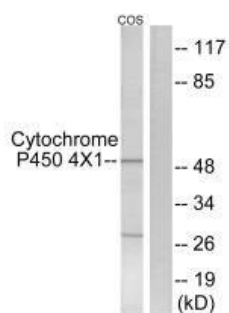
Synthesized peptide derived from internal of human Cytochrome P450 4X1.

**Storage:**

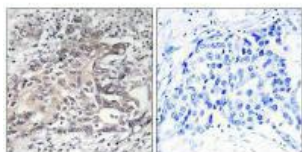
Rabbit IgG in phosphate buffered saline (without Mg<sup>2+</sup> and Ca<sup>2+</sup>), pH 7.4, 150mM NaCl, 0.02% sodium azide and 50% glycerol.

## Product Images

---



Western blot analysis of extracts from COS7 cells, using Cytochrome P450 4X1 antibody.



Immunohistochemistry analysis of paraffin-embedded human liver carcinoma tissue using Cytochrome P450 4X1 antibody.