

Product Information

Size:

100ul

Reactivity:

Human

Source:

Rabbit

Isotype:

IgG

Applications:

ELISA, WB, IHC

Recommended dilutions:

ELISA:1:2000-1:10000, WB:1:500-1:3000,
IHC:1:50-1:100

Protein Background:

Essential component of a MLL/SET1 histone methyltransferase (HMT) complex, a complex that specifically methylates 'Lys-4' of histone H3 (H3K4). Functions as a transcriptional regulator. Binds to the TERT promoter and represses telomerase expression. Plays a role in TGF β 1-mediated inhibition of cell-proliferation, possibly regulating SMAD3 transcriptional activity. Represses JUND-mediated transcriptional activation on AP1 sites, as well as that mediated by NF κ B subunit RELA. Positively regulates HOXC8 and HOXC6 gene expression. May be involved in normal hematopoiesis through the activation of HOXA9 expression. By similarity. May be involved in DNA repair.

Gene ID:

MEN1

Uniprot

O00255

Synonyms:

MEAI; Menin; SCG2; Wermer syndrome; Zollinger-Ellison syndrome

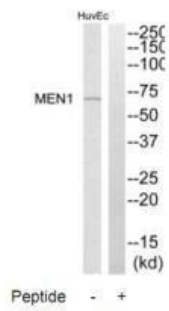
Immunogen:

Synthesized peptide derived from internal of human MEN1.

Storage:

Rabbit IgG in phosphate buffered saline (without Mg $^{2+}$ and Ca $^{2+}$), pH 7.4, 150mM NaCl, 0.02% sodium azide and 50% glycerol.

Product Images



Western blot analysis of extracts from HuvEc cells, using MEN1 antibody.

Immunohistochemistry analysis of paraffin-embedded human colon carcinoma tissue, using MEN1 antibody.

