

# MRPL16 Antibody



PACO23354

---

## Product Information

**Size:**

100ul

**Reactivity:**

Human

**Source:**

Rabbit

**Isotype:**

IgG

**Applications:**

ELISA, WB, IHC

**Recommended dilutions:**

ELISA:1:2000-1:10000, WB:1:500-1:3000,  
IHC:1:50-1:100

**Protein Background:**

Component of the large subunit of mitochondrial ribosome.

**Gene ID:**

MRPL16

**Uniprot**

Q9NX20

**Synonyms:**

39S ribosomal protein L16; mitochondrial; L16mt; mitochondrial ribosomal protein L16;  
MRP-L16

**Immunogen:**

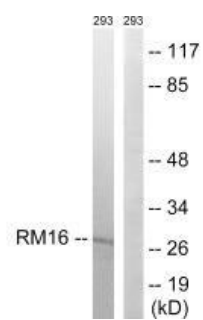
Synthesized peptide derived from internal of human MRPL16.

**Storage:**

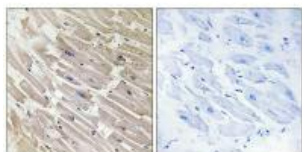
Rabbit IgG in phosphate buffered saline (without Mg<sup>2+</sup> and Ca<sup>2+</sup>), pH 7.4, 150mM NaCl, 0.02% sodium azide and 50% glycerol.

## Product Images

---



Western blot analysis of extracts from 293 cells, using MRPL16 antibody.



Immunohistochemistry analysis of paraffin-embedded human heart tissue using MRPL16 antibody.