

PACO23355

Product Information

Size:

100ul

Reactivity:

Human, Mouse, Rat

Source:

Rabbit

Isotype:

IgG

Applications:

ELISA, WB, IHC

Recommended dilutions:

ELISA:1:2000-1:10000, WB:1:500-1:3000,
IHC:1:50-1:100

Protein Background:

Calcium/calmodulin-dependent protein kinase belonging to a proposed calcium-triggered signaling cascade. In vitro phosphorylates CREB1 and SYN1/synapsin I. Phosphorylates and activates CAMK1 By similarity.

Gene ID:

PNCK

Uniprot

Q6P2M8

Synonyms:

Calcium/calmodulin-dependent protein kinase type 1B; EC 2.7.11.17; CaM kinase IB; CaM kinase I beta; CaMKI-beta

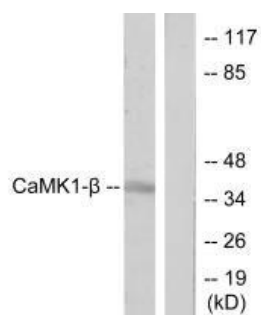
Immunogen:

Synthesized peptide derived from internal of human CaMK1- beta.

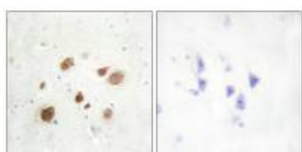
Storage:

Rabbit IgG in phosphate buffered saline (without Mg²⁺ and Ca²⁺), pH 7.4, 150mM NaCl, 0.02% sodium azide and 50% glycerol.

Product Images



Western blot analysis of extracts from LOVO cells, treated with H₂O₂ (100uM, 30mins), using CaMK1- beta antibody.



Immunohistochemistry analysis of paraffin-embedded human brain tissue using CaMK1- beta antibody.