

RPS3 Antibody



PACO23361

Product Information

Size:

100ul

Reactivity:

Human, Mouse

Source:

Rabbit

Isotype:

IgG

Applications:

ELISA, WB, IHC

Recommended dilutions:

ELISA:1:2000-1:10000, WB:1:500-1:3000,
IHC:1:50-1:100

Protein Background:

Gene ID:

RPS3

Uniprot

P23396

Synonyms:

40S ribosomal protein S3; RS3;

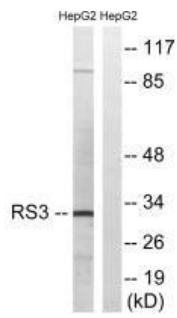
Immunogen:

Synthesized peptide derived from internal of human RPS3.

Storage:

Rabbit IgG in phosphate buffered saline (without Mg²⁺ and Ca²⁺), pH 7.4, 150mM NaCl, 0.02% sodium azide and 50% glycerol.

Product Images



Western blot analysis of extracts from HepG2 cells, using RPS3 antibody.

Immunohistochemistry analysis of paraffin-embedded human tonsil tissue using RPS3 antibody.

