

Product Information

Size:

100ul

Reactivity:

Human, Mouse, Rat

Source:

Rabbit

Isotype:

IgG

Applications:

ELISA, WB, IF

Recommended dilutions:

ELISA:1:2000-1:10000, WB:1:500-1:3000,
IF:1:100-1:500

Protein Background:

Ribosomes, the organelles that catalyze protein synthesis, consist of a small 40S subunit and a large 60S subunit. Together these subunits are composed of 4 RNA species and approximately 80 structurally distinct proteins. This gene encodes a ribosomal protein that is a component of the 60S subunit. The protein belongs to the L15P family of ribosomal proteins. It is located in the cytoplasm. Variable expression of this gene in colorectal cancers compared to adjacent normal tissues has been observed, although no correlation between the level of expression and the severity of the disease has been found. As is typical for genes encoding ribosomal proteins, multiple processed pseudogenes derived from this gene are dispersed through the genome.

Gene ID:

RPL27A

Uniprot

P46776

Synonyms:

MGC87238; RL27A;

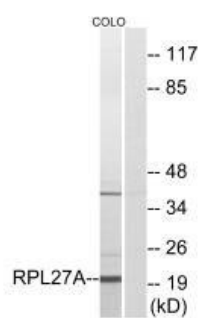
Immunogen:

Synthesized peptide derived from C-terminal of human RPL27A.

Storage:

Rabbit IgG in phosphate buffered saline (without Mg²⁺ and Ca²⁺), pH 7.4, 150mM NaCl, 0.02% sodium azide and 50% glycerol.

Product Images



Western blot analysis of extracts from COLO cells, using RPL27A antibody.

Immunofluorescence analysis of A549 cells, using RPL27A antibody.

