

PACO23378

Product Information

Size:

100ul

Reactivity:

Human

Source:

Rabbit

Isotype:

IgG

Applications:

ELISA, WB, IF

Recommended dilutions:

ELISA:1:2000-1:10000, WB:1:500-1:3000,
IF:1:100-1:500

Protein Background:

Sodium permeable non-voltage-sensitive ion channel inhibited by the diuretic amiloride. Mediates the electrodiffusion of the luminal sodium (and water, which follows osmotically) through the apical membrane of epithelial cells. Controls the reabsorption of sodium in kidney, colon, lung and sweat glands. Also plays a role in taste perception.

Gene ID:

SCNN1D

Uniprot

P51172

Synonyms:

Amiloride-sensitive sodium channel subunit delta; Epithelial Na(+) channel subunit delta; Delta-ENaC; SCNED; Nonvoltage-gated sodium channel 1 subunit delta

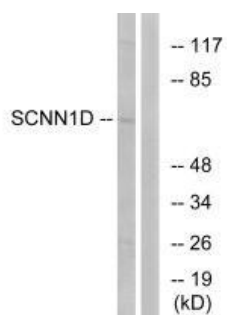
Immunogen:

Synthesized peptide derived from internal of human SCNN1D.

Storage:

Rabbit IgG in phosphate buffered saline (without Mg²⁺ and Ca²⁺), pH 7.4, 150mM NaCl, 0.02% sodium azide and 50% glycerol.

Product Images



Western blot analysis of extracts from RAW264.7 cells, using SCNN1D antibody.

Immunofluorescence analysis of A549 cells, using SCNN1D antibody.

