

PACO23387

---

## Product Information

**Size:**

100ul

**Reactivity:**

Human

**Source:**

Rabbit

**Isotype:**

IgG

**Applications:**

ELISA, WB, IF

**Recommended dilutions:**

ELISA:1:2000-1:10000, WB:1:500-1:3000,  
IF:1:100-1:500

**Protein Background:**

Displays arylsulfatase activity at neutral pH, when co-expressed with SUMF1; arylsulfatase activity is measured in the secretion medium of retinal cell line, but no activity is recorded when measured in cell extracts.

**Gene ID:**

ARSI

**Uniprot**

Q5FYB1

**Synonyms:**

arylsulfatase I; ASI; EC 3.1.6. -;

**Immunogen:**

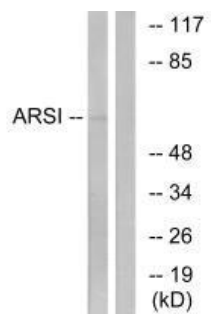
Synthesized peptide derived from internal of human ARSI.

**Storage:**

Rabbit IgG in phosphate buffered saline (without Mg<sup>2+</sup> and Ca<sup>2+</sup>), pH 7.4, 150mM NaCl, 0.02% sodium azide and 50% glycerol.

## Product Images

---



Western blot analysis of extracts from COS7 cells, using ARSI antibody.

Immunofluorescence analysis of MCF-7 cells, using ARSI antibody.

