

CLCC1 Antibody



PACO23412

Product Information

Size:

100ul

Reactivity:

Human

Source:

Rabbit

Isotype:

IgG

Applications:

ELISA, WB, IHC, IF

Recommended dilutions:

ELISA:1:2000-1:10000, WB:1:500-1:3000,
IHC:1:50-1:200, IF:1:100-1:200

Protein Background:

Seems to act as a chloride ion channel By similarity.

Gene ID:

CLCC1

Uniprot

Q96S66

Synonyms:

KIAA0761; MCLC; mid-1-related chloride channel 1;

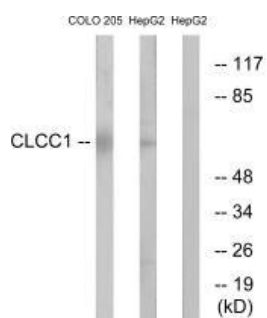
Immunogen:

Synthesized peptide derived from internal of human CLCC1.

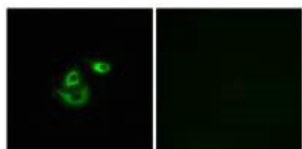
Storage:

Rabbit IgG in phosphate buffered saline (without Mg²⁺ and Ca²⁺), pH 7.4, 150mM NaCl, 0.02% sodium azide and 50% glycerol.

Product Images



Western blot analysis of extracts from COLO cells and HepG2 cells, using CLCC1 antibody.



Immunofluorescence analysis of A549 cells, using CLCC1 antibody.