

# ST6GAL1 Antibody



PACO23417

---

## Product Information

**Size:**

100ul

**Reactivity:**

Human

**Source:**

Rabbit

**Isotype:**

IgG

**Applications:**

ELISA, WB, IHC

**Recommended dilutions:**

ELISA:1:2000-1:10000, WB:1:500-1:3000,  
IHC:1:50-1:100

**Protein Background:**

Transfers sialic acid from CMP-sialic acid to galactose-containing acceptor substrates.

**Gene ID:**

ST6GAL1

**Uniprot**

P15907

**Synonyms:**

Alpha 2; 6-ST; B-cell antigen CD75; Beta-galactoside alpha-2; 6-sialyltransferase

**Immunogen:**

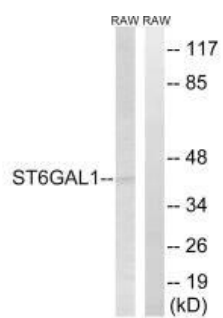
Synthesized peptide derived from internal of human ST6GAL1.

**Storage:**

Rabbit IgG in phosphate buffered saline (without Mg<sup>2+</sup> and Ca<sup>2+</sup>), pH 7.4, 150mM NaCl, 0.02% sodium azide and 50% glycerol.

## Product Images

---



Western blot analysis of extracts from RAW264.7 cells, using ST6GAL1 antibody.

Immunohistochemistry analysis of paraffin-embedded human prostate carcinoma tissue, using ST6GAL1 antibody.

