

PACO23431

Product Information

Size:

100ul

Reactivity:

Human

Source:

Rabbit

Isotype:

IgG

Applications:

ELISA, WB, IHC

Recommended dilutions:

ELISA:1:2000-1:10000, WB:1:500-1:3000,
IHC:1:50-1:100

Protein Background:

Condensing enzyme that catalyzes the synthesis of monounsaturated and of polyunsaturated very long chain fatty acids Acts specifically toward polyunsaturated acyl-CoA with the higher activity toward C18:3(n-6) acyl-CoA.

Gene ID:

ELOVL5

Uniprot

Q9NYP7

Synonyms:

Elongation of very long chain fatty acids protein 5; ELOV5; ELOVL2; hELO1;

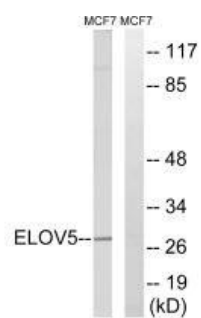
Immunogen:

Synthesized peptide derived from internal of human ELOVL5.

Storage:

Rabbit IgG in phosphate buffered saline (without Mg²⁺ and Ca²⁺), pH 7.4, 150mM NaCl, 0.02% sodium azide and 50% glycerol.

Product Images



Western blot analysis of extracts from MCF-7 cells, using ELOVL5 antibody.

Immunohistochemistry analysis of paraffin-embedded human brain tissue using ELOVL5 antibody.

