
Product Information

Size:

100ul

Reactivity:

Human

Source:

Rabbit

Isotype:

IgG

Applications:

ELISA, WB, IHC

Recommended dilutions:

ELISA:1:2000-1:10000, WB:1:500-1:3000,
IHC:1:50-1:100

Protein Background:

Guanine nucleotide-binding proteins (G proteins) are involved as a modulator or transducer in various transmembrane signaling systems. The beta and gamma chains are required for the GTPase activity, for replacement of GDP by GTP, and for G protein-effector interaction.

Gene ID:

GNB5

Uniprot

O14775

Synonyms:

Guanine nucleotide-binding protein subunit beta-5; Transducin beta chain 5; Gbeta5;

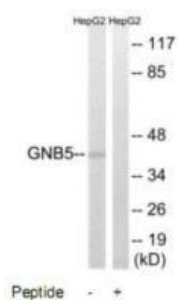
Immunogen:

Synthesized peptide derived from internal of human GNB5.

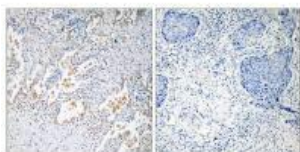
Storage:

Rabbit IgG in phosphate buffered saline (without Mg²⁺ and Ca²⁺), pH 7.4, 150mM NaCl, 0.02% sodium azide and 50% glycerol.

Product Images



Western blot analysis of extracts from HepG2 cells, using GNB5 antibody.



Immunohistochemistry analysis of paraffin-embedded human lung carcinoma tissue using GNB5 antibody.