

# NUMA1 Antibody



PACO23456

---

## Product Information

**Size:**

100ul

**Reactivity:**

Human

**Source:**

Rabbit

**Isotype:**

IgG

**Applications:**

ELISA, WB, IHC

**Recommended dilutions:**

ELISA:1:2000-1:10000, WB:1:500-1:3000,  
IHC:1:50-1:100

**Protein Background:**

Highly abundant component of the nuclear matrix where it may serve a non-mitotic structural role, occupies the majority of the nuclear volume. Required for maintenance and establishment of the mitotic spindle poles, functioning as a tether linking bulk microtubules of the spindle to centrosomes. May be involved in coordination of the alignment of the mitotic spindle to the cellular polarity axis, which is a prerequisite for asymmetric cell divisions.

**Gene ID:**

NUMA1

**Uniprot**

Q14980

**Synonyms:**

Nuclear mitotic apparatus protein 1; NuMA protein; SP-H antigen;

**Immunogen:**

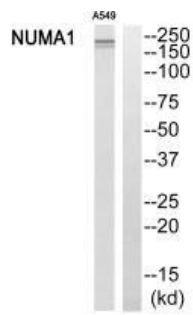
Synthesized peptide derived from internal of human NUMA1.

**Storage:**

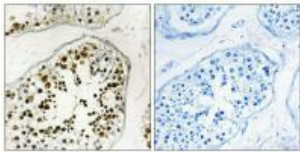
Rabbit IgG in phosphate buffered saline (without Mg<sup>2+</sup> and Ca<sup>2+</sup>), pH 7.4, 150mM NaCl, 0.02% sodium azide and 50% glycerol.

## Product Images

---



Western blot analysis of extracts from A549 cells, using NUMA1 antibody.



Immunohistochemistry analysis of paraffin-embedded human testis tissue using NUMA1 antibody.