

PACO23462

Product Information

Size:

100ul

Reactivity:

Human

Source:

Rabbit

Isotype:

IgG

Applications:

ELISA, WB, IHC

Recommended dilutions:

ELISA:1:2000-1:10000, WB:1:500-1:3000,
IHC:1:50-1:100

Protein Background:

Probable potassium channel subunit. No channel activity observed in heterologous systems. May need to associate with another protein to form a functional channel.

Gene ID:

KCNK15

Uniprot

Q9H427

Synonyms:

Acid-sensitive potassium channel protein TASK-5; Potassium channel subfamily K member 15; TASK5; TWIK-related acid-sensitive K(+) channel 5; Two pore potassium channel KT3.3

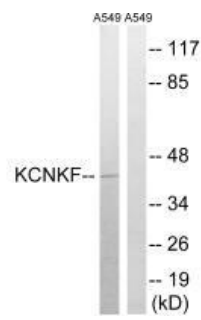
Immunogen:

Synthesized peptide derived from internal of human KCNK15.

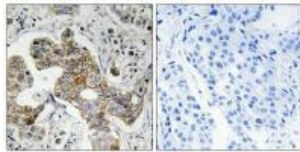
Storage:

Rabbit IgG in phosphate buffered saline (without Mg²⁺ and Ca²⁺), pH 7.4, 150mM NaCl, 0.02% sodium azide and 50% glycerol.

Product Images



Western blot analysis of extracts from A549 cells, using KCNK15 antibody.



Immunohistochemistry analysis of paraffin-embedded human breast carcinoma tissue using KCNK15 antibody.