

PACO23464

Product Information

Size:

100ul

Reactivity:

Human

Source:

Rabbit

Isotype:

IgG

Applications:

ELISA, WB, IHC

Recommended dilutions:

ELISA:1:2000-1:10000, WB:1:500-1:3000,
IHC:1:50-1:100

Protein Background:

Belongs to the POTE family. 3 isoforms of the human protein are produced by alternative splicing.

Gene ID:

POTEG/POTEH

Uniprot

Q6S5H5/Q6S545

Synonyms:

Prostate; ovary; testis-expressed protein on chromosome 14; POTE-14;

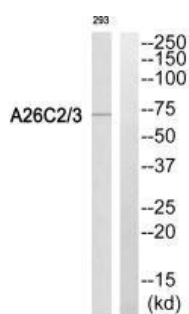
Immunogen:

Synthesized peptide derived from internal of human A26C2/3.

Storage:

Rabbit IgG in phosphate buffered saline (without Mg²⁺ and Ca²⁺), pH 7.4, 150mM NaCl, 0.02% sodium azide and 50% glycerol.

Product Images



Western blot analysis of extracts from 293 cells, using A26C2/3 antibody.

Immunohistochemistry analysis of paraffin-embedded human prostate carcinoma tissue using A26C2/3 antibody.

