
Product Information

Size:

100ul

Reactivity:

Human, Mouse, Rat

Source:

Rabbit

Isotype:

IgG

Applications:

ELISA, WB, IHC

Recommended dilutions:

ELISA:1:2000-1:10000, WB:1:500-1:3000,
IHC:1:50-1:100

Protein Background:

Contributes to the maintenance of intracerebral BDNF levels within the normal range, which is necessary for the preservation of spatial learning and the resistance to neuronal cell death caused by ischemic stress. By similarity. May enhance growth factor-induced ERK1 and ERK2 phosphorylation, including that induced by PDGF and FGF. May attenuate NGF-promoted ELK1 phosphorylation in a microtubule-dependent manner.

Gene ID:

NDRG4

Uniprot

Q9ULP0

Synonyms:

Brain development-related molecule 1; Protein NDRG4; SMAP-8; Vascular smooth muscle cell-associated protein 8;

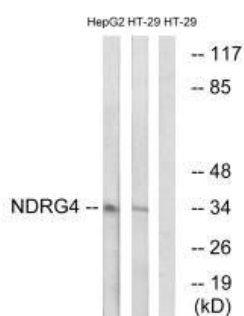
Immunogen:

Synthesized peptide derived from internal of human NDRG4.

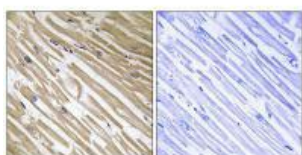
Storage:

Rabbit IgG in phosphate buffered saline (without Mg²⁺ and Ca²⁺), pH 7.4, 150mM NaCl, 0.02% sodium azide and 50% glycerol.

Product Images



Western blot analysis of extracts from HepG2 cells and HT-29 cells, using NDRG4 antibody.



Immunohistochemistry analysis of paraffin-embedded human heart tissue using NDRG4 antibody.