

PACO23466

---

## Product Information

**Size:**

100ul

**Reactivity:**

Human

**Source:**

Rabbit

**Isotype:**

IgG

**Applications:**

ELISA, WB, IHC

**Recommended dilutions:**

ELISA:1:2000-1:10000, WB:1:500-1:3000,  
IHC:1:50-1:100

**Protein Background:**

Protein phosphatase which may play a role in the regulation of actin filament dynamics. Can dephosphorylate and activate the actin binding/depolymerizing factor cofilin, which subsequently binds to actin filaments and stimulates their disassembly By similarity.

**Gene ID:**

SSH3

**Uniprot**

Q8TE77

**Synonyms:**

Protein phosphatase Slingshot homolog 3; SSH-3L; hSSH-3L;

**Immunogen:**

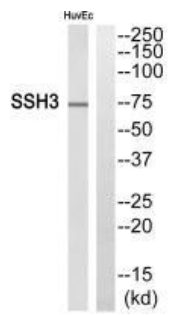
Synthesized peptide derived from internal of human SSH3.

**Storage:**

Rabbit IgG in phosphate buffered saline (without Mg<sup>2+</sup> and Ca<sup>2+</sup>), pH 7.4, 150mM NaCl, 0.02% sodium azide and 50% glycerol.

## Product Images

---



Western blot analysis of extracts from HuvEc cells, using SSH3 antibody.

Immunohistochemistry analysis of paraffin-embedded human lung carcinoma tissue using SSH3 antibody.

