

PACO23470

Product Information

Size:

100ul

Reactivity:

Human

Source:

Rabbit

Isotype:

IgG

Applications:

ELISA, WB, IHC

Recommended dilutions:

ELISA:1:2000-1:10000, WB:1:500-1:3000,
IHC:1:50-1:100

Protein Background:

Substrate-binding subunit (component A) of the Rab geranylgeranyltransferase (GGTase) complex. Binds unprenylated Rab proteins and presents the substrate peptide to the catalytic component B. The component A is thought to be regenerated by transferring its prenylated Rab back to the donor membrane. Less effective than CHM in supporting prenylation of Rab3 family.

Gene ID:

CHML

Uniprot

P26374

Synonyms:

Rab proteins geranylgeranyltransferase component A 2; Rab escort protein 2; REP-2; Choroideraemia-like protein;

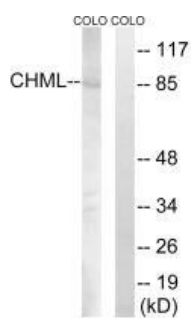
Immunogen:

Synthesized peptide derived from internal of human CHML.

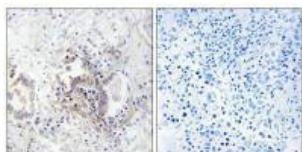
Storage:

Rabbit IgG in phosphate buffered saline (without Mg²⁺ and Ca²⁺), pH 7.4, 150mM NaCl, 0.02% sodium azide and 50% glycerol.

Product Images



Western blot analysis of extracts from COLO cells, using CHML antibody.



Immunohistochemistry analysis of paraffin-embedded human lung carcinoma tissue, using CHML antibody.