

PACO23473

Product Information

Size:

100ul

Reactivity:

Human, Mouse

Source:

Rabbit

Isotype:

IgG

Applications:

ELISA, WB, IHC

Recommended dilutions:

ELISA:1:2000-1:10000, WB:1:500-1:3000,
IHC:1:50-1:100

Protein Background:

Regulates synaptic membrane exocytosis By similarity.

Gene ID:

RIMS4

Uniprot

Q9H426

Synonyms:

Rab3-interacting molecule 4; RIM 4; RIM4 gamma; C20orf190; regulating synaptic membrane exocytosis 4

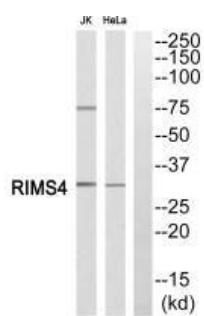
Immunogen:

Synthesized peptide derived from internal of human RIMS4.

Storage:

Rabbit IgG in phosphate buffered saline (without Mg²⁺ and Ca²⁺), pH 7.4, 150mM NaCl, 0.02% sodium azide and 50% glycerol.

Product Images



Western blot analysis of extracts from JK cells and HeLa cells, using RIMS4 antibody.

Immunohistochemistry analysis of paraffin-embedded human breast carcinoma tissue using RIMS4 antibody.

