

PACO23474

---

## Product Information

**Size:**

100ul

**Reactivity:**

Human

**Source:**

Rabbit

**Isotype:**

IgG

**Applications:**

ELISA, WB, IHC

**Recommended dilutions:**

ELISA:1:2000-1:10000, WB:1:500-1:3000,  
IHC:1:50-1:100

**Protein Background:**

Inhibits signal transduction by increasing the GTPase activity of G protein alpha subunits thereby driving them into their inactive GDP-bound form. This protein may be involved in the regulation of B-cell activation and proliferation.

**Gene ID:**

RGS1

**Uniprot**

Q08116

**Synonyms:**

RGS1; Early response protein 1R20; B-cell activation protein BL34;

**Immunogen:**

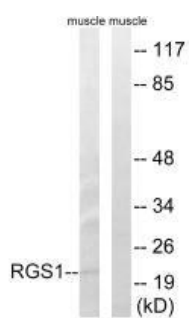
Synthesized peptide derived from internal of human RGS1.

**Storage:**

Rabbit IgG in phosphate buffered saline (without Mg<sup>2+</sup> and Ca<sup>2+</sup>), pH 7.4, 150mM NaCl, 0.02% sodium azide and 50% glycerol.

## Product Images

---



Western blot analysis of extracts from mouse muscle cells, using RGS1 antibody.

Immunohistochemistry analysis of paraffin-embedded human colon carcinoma tissue, using RGS1 antibody.

