

# URI1 Antibody



PACO23476

---

## Product Information

**Size:**

100ul

**Reactivity:**

Human

**Source:**

Rabbit

**Isotype:**

IgG

**Applications:**

ELISA, WB, IHC

**Recommended dilutions:**

ELISA:1:2000-1:10000, WB:1:500-1:3000,  
IHC:1:50-1:100

**Protein Background:****Gene ID:**

URI1

**Uniprot**

O94763

**Synonyms:**

NNX3; RNA polymerase II subunit 5-mediating protein; RNA polymerase II; subunit 5-mediating protein; RPB5-mediating protein

**Immunogen:**

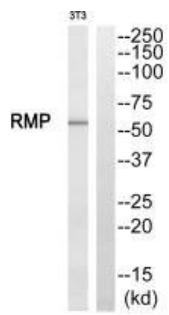
Synthesized peptide derived from C-terminal of human RMP.

**Storage:**

Rabbit IgG in phosphate buffered saline (without Mg<sup>2+</sup> and Ca<sup>2+</sup>), pH 7.4, 150mM NaCl, 0.02% sodium azide and 50% glycerol.

## Product Images

---



Western blot analysis of extracts from NIH/3T3 cells, using RMP antibody.

Immunohistochemistry analysis of paraffin-embedded human breast carcinoma tissue, using RMP antibody.

