

# SESN1 Antibody



PACO23481

---

## Product Information

**Size:**

100ul

**Reactivity:**

Human

**Source:**

Rabbit

**Isotype:**

IgG

**Applications:**

ELISA, WB, IHC

**Recommended dilutions:**

ELISA:1:2000-1:10000, WB:1:500-1:3000,  
IHC:1:50-1:100

**Protein Background:**

Involved in the reduction of peroxiredoxins. May also be regulator of cellular growth.

**Gene ID:**

SESN1

**Uniprot**

Q9Y6P5

**Synonyms:**

Sestrin-1; p53-regulated protein PA26; SESN1;

**Immunogen:**

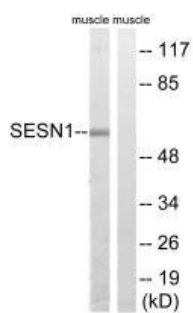
Synthesized peptide derived from internal of human SESN1.

**Storage:**

Rabbit IgG in phosphate buffered saline (without Mg<sup>2+</sup> and Ca<sup>2+</sup>), pH 7.4, 150mM NaCl, 0.02% sodium azide and 50% glycerol.

## Product Images

---



Western blot analysis of extracts from rat muscle cells, using SESN1 antibody.

Immunohistochemistry analysis of paraffin-embedded human breast carcinoma tissue, using SESN1 antibody.

