

PACO23484

Product Information

Size:

100ul

Reactivity:

Human, Mouse

Source:

Rabbit

Isotype:

IgG

Applications:

ELISA, WB, IHC

Recommended dilutions:

ELISA:1:2000-1:10000, WB:1:500-1:3000,
IHC:1:50-1:100

Protein Background:

Involved in the regulation of the microtubule (MT) filament system by destabilizing microtubules. Prevents assembly and promotes disassembly of microtubules. Phosphorylation at Ser-16 may be required for axon formation during neurogenesis. Involved in the control of the learned and innate fear By similarity.

Gene ID:

STMN1

Uniprot

P16949

Synonyms:

SHC-transforming protein 3; SH2 domain protein C3; Src homology 2 domain-containing-transforming protein C3; Neuronal Shc; N-Shc

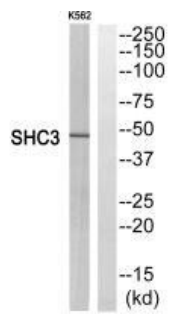
Immunogen:

Synthesized peptide derived from internal of human SHC3.

Storage:

Rabbit IgG in phosphate buffered saline (without Mg²⁺ and Ca²⁺), pH 7.4, 150mM NaCl, 0.02% sodium azide and 50% glycerol.

Product Images



Western blot analysis of extracts from K562 cells, using SHC3 antibody.

Immunohistochemistry analysis of paraffin-embedded human lung tissue using SHC3 antibody.

