

PACO23504

Product Information

Size:

100ul

Reactivity:

Human

Source:

Rabbit

Isotype:

IgG

Applications:

ELISA, WB, IHC

Recommended dilutions:

ELISA:1:2000-1:10000, WB:1:500-1:3000,
IHC:1:50-1:100

Protein Background:

Regulates and initiates biosynthesis of N-acetylneuraminic acid (NeuAc), a precursor of sialic acids. Plays an essential role in early development. By similarity. Required for normal sialylation in hematopoietic cells. Sialylation is implicated in cell adhesion, signal transduction, tumorigenicity and metastatic behavior of malignant cells.

Gene ID:

GNE

Uniprot

Q9Y223

Synonyms:

Bifunctional UDP-N-acetylglucosamine 2-epimerase/N-acetylmannosamine kinase; UDP-GlcNAc-2-epimerase/ManAc kinase; UDP-N-acetylglucosamine 2-epimerase; UDP-GlcNAc-2-epimerase; Uridine diphosphate-N-acetylglucosamine-2-epimeraseN-acetylmannosamine kinase

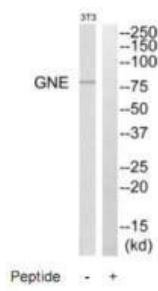
Immunogen:

Synthesized peptide derived from C-terminal of human GNE.

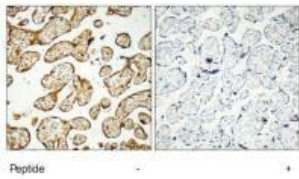
Storage:

Rabbit IgG in phosphate buffered saline (without Mg²⁺ and Ca²⁺), pH 7.4, 150mM NaCl, 0.02% sodium azide and 50% glycerol.

Product Images



Western blot analysis of extracts from NIH/3T3 cells, using GNE antibody.



Immunohistochemistry analysis of paraffin-embedded human placenta tissue, using GNE antibody.