

PACO23506

Product Information

Size:

100ul

Reactivity:

Human

Source:

Rabbit

Isotype:

IgG

Applications:

ELISA, WB, IHC

Recommended dilutions:

ELISA:1:2000-1:10000, WB:1:500-1:3000,
IHC:1:50-1:100

Protein Background:

Involved in bile acid synthesis and is responsible for the conversion of 7 alpha-hydroxy-4-cholesten-3-one into 7 alpha, 12 alpha-dihydroxy-4-cholesten-3-one. Responsible for the balance between formation of cholic acid and chenodeoxycholic acid. Has a rather broad substrate specificity including a number of 7-alpha-hydroxylated C27 steroids.

Gene ID:

CYP8B1

Uniprot

Q9UNU6

Synonyms:

Cytochrome P450; family 8; subfamily B; polypeptide 1; CYP8B1

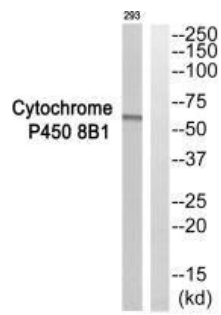
Immunogen:

Synthesized peptide derived from internal of human Cytochrome P450 8B1.

Storage:

Rabbit IgG in phosphate buffered saline (without Mg²⁺ and Ca²⁺), pH 7.4, 150mM NaCl, 0.02% sodium azide and 50% glycerol.

Product Images



Western blot analysis of extracts from 293 cells, using Cytochrome P450 8B1 antibody.

Immunohistochemistry analysis of paraffin-embedded human liver carcinoma tissue, using Cytochrome P450 8B1 antibody.

