

### Product Information

**Size:**

100ul

**Reactivity:**

Human, Mouse, Rat

**Source:**

Rabbit

**Isotype:**

IgG

**Applications:**

ELISA, WB, IHC

**Recommended dilutions:**

ELISA:1:2000-1:10000, WB:1:500-1:3000,  
IHC:1:50-1:100

**Protein Background:**

This gene encodes a protein that belongs to the family of adenosine receptors, which are G-protein-coupled receptors that are involved in a variety of intracellular signaling pathways and physiological functions. The receptor encoded by this gene mediates a sustained cardioprotective function during cardiac ischemia, it is involved in the inhibition of neutrophil degranulation in neutrophil-mediated tissue injury, it has been implicated in both neuroprotective and neurodegenerative effects, and it may also mediate both cell proliferation and cell death. Multiple transcript variants encoding different isoforms have been found for this gene.

**Gene ID:**

ADORA3

**Uniprot**

P33765

**Synonyms:**

A3AR; AD026

**Immunogen:**

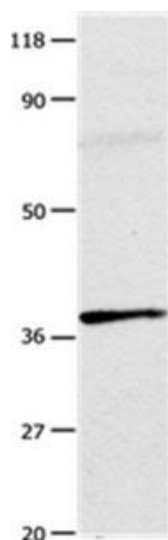
Fusion protein corresponding to a region derived from internal residues of human Adenosine receptor A3.

**Storage:**

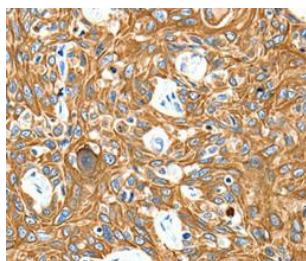
Rabbit IgG in pH7.3 PBS, 0.05% NaN<sub>3</sub>, 50% Glycerol.

## Product Images

---



Gel: 10%SDS-PAGE Lysates (from left to right): Mouse testis tissue  
Amount of lysate: 20ug per lane Primary antibody: 1/100 dilution  
Secondary antibody dilution: 1/8000 Exposure time: 1 minute.



Immunohistochemical analysis of paraffin-embedded Human esophagus cancer tissue using at dilution 1/20.