

Product Information

Size:

100ul

Reactivity:

Human, Mouse, Rat

Source:

Rabbit

Isotype:

IgG

Applications:

ELISA, IHC

Recommended dilutions:

ELISA:1:2000-1:10000, IHC:1:50-1:100

Protein Background:

SPAG4--has been identified as nuclear envelope (NE) proteins. Using bioinformatic analysis indicated that SPAG4L contained a conserved SUN domain in the C-terminal. Subcellular localization analysis indicated that the expression of green fluorescent protein-labeled full-length SPAG4L was localized to the NE and the endoplasmic reticulum (ER). Spag4L express in meiosis I and II stages, possibly suggesting that Spag4L is involved in NE reconstitution and nuclear migration occurring during the process of spermatocyte division.

Gene ID:

SUN5

Uniprot

Q8TC36

Synonyms:

SPAG4L; TSARG4; dJ726C3.1

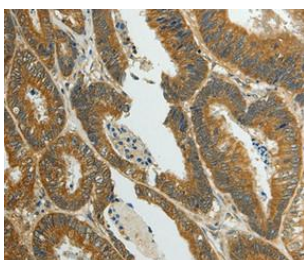
Immunogen:

Synthetic peptide corresponding to a region derived from internal residues of human Sad1 and UNC84 domain containing 5.

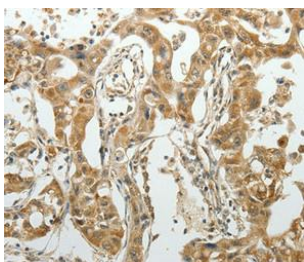
Storage:

Rabbit IgG in pH7.3 PBS, 0.05% NaN₃, 50% Glycerol.

Product Images



Immunohistochemical analysis of paraffin-embedded Human colon cancer tissue using at dilution 1/70.



Immunohistochemical analysis of paraffin-embedded Human lung cancer tissue using at dilution 1/70.