

Product Information

Size:

100ul

Reactivity:

Human, Mouse, Rat

Source:

Rabbit

Isotype:

IgG

Applications:

ELISA, IHC

Recommended dilutions:

ELISA:1:2000-1:10000, IHC:1:50-1:100

Protein Background:

This gene is a classical cadherin from the cadherin superfamily. The encoded protein is a calcium dependent cell-cell adhesion glycoprotein comprised of five extracellular cadherin repeats, a transmembrane region and a highly conserved cytoplasmic tail. Mutations in this gene are correlated with gastric, breast, colorectal, thyroid and ovarian cancer. Loss of function is thought to contribute to progression in cancer by increasing proliferation, invasion, and/or metastasis. The ectodomain of this protein mediates bacterial adhesion to mammalian cells and the cytoplasmic domain is required for internalization. Identified transcript variants arise from mutation at consensus splice sites.

Gene ID:

CDH23

Uniprot

Q9H251

Synonyms:

KIAA1774; KIAA1812

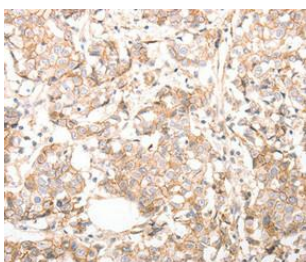
Immunogen:

Synthetic peptide corresponding to residues near the C terminal of human pan-cadherin.

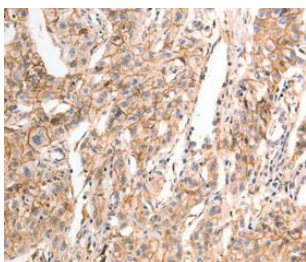
Storage:

Rabbit IgG in pH7.3 PBS, 0.05% NaN₃, 50% Glycerol.

Product Images



Immunohistochemical analysis of paraffin-embedded Human breast cancer tissue using at dilution 1/30.



Immunohistochemical analysis of paraffin-embedded Human liver cancer tissue using at dilution 1/30.