

# SLC41A3 Antibody



PACO23530

---

## Product Information

**Size:**

100ul

**Reactivity:**

Human, Mouse, Rat

**Source:**

Rabbit

**Isotype:**

IgG

**Applications:**

ELISA, IHC

**Recommended dilutions:**

ELISA:1:2000-1:10000, IHC:1:50-1:100

**Protein Background:**

SLC41A3 (solute carrier family 41 member 3) is a 507 amino acid multi-pass membrane protein that belongs to the SLC41A transporter family that includes SLC41A1 and SLC41A2. Localizing to the cell membrane, SLC41A3 contains ten transmembrane domains and is believed to function as a plasma-membrane cation transporter. Its other two family members, SLC41A1 and SLC41A2, have been characterized to function as magnesium transporters and are essential for maintaining magnesium homeostasis within the cell.

**Gene ID:**

SLC41A3

**Uniprot**

Q96GZ6

**Synonyms:**

SLC41A1-L2

**Immunogen:**

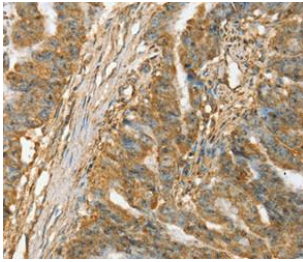
Synthetic peptide corresponding to a region derived from internal residues of human solute carrier family 41, member 3.

**Storage:**

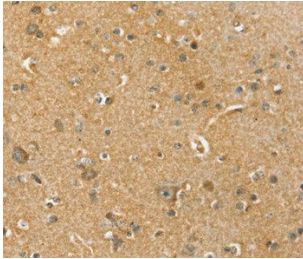
Rabbit IgG in pH7.3 PBS, 0.05% NaN<sub>3</sub>, 50% Glycerol.

## Product Images

---



Immunohistochemical analysis of paraffin-embedded Human esophagus cancer tissue using at dilution 1/45.



Immunohistochemical analysis of paraffin-embedded Human brain tissue using at dilution 1/45.