

# RELA (Ab-276) Antibody



PACO23535

---

## Product Information

**Size:**

100ul

**Reactivity:**

Human, Mouse, Rat

**Source:**

Rabbit

**Isotype:**

IgG

**Applications:**

ELISA, WB, IHC, IF

**Recommended dilutions:**

ELISA:1:2000-1:10000, WB:1:500-1:1000,  
IHC:1:50-1:200, IF:1:100-1:200

**Protein Background:****Gene ID:**

RELA

**Uniprot**

Q04206

**Synonyms:**

NFKB3; RELA; TF65; Transcription factor p65; p65

**Immunogen:**

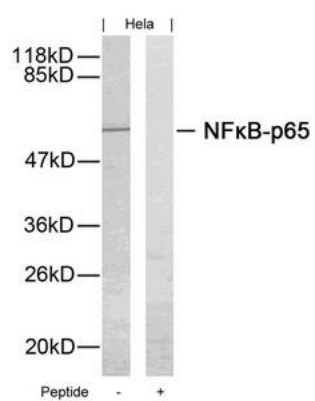
Peptide sequence around aa.274~278 (R-P-S-D-R) derived from Human NFkB-p65.

**Storage:**

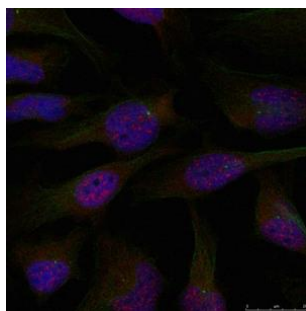
Supplied at 1.0mg/mL in phosphate buffered saline (without Mg<sup>2+</sup> and Ca<sup>2+</sup>), pH 7.4,  
150mM NaCl, 0.02% sodium azide and 50% glycerol.

## Product Images

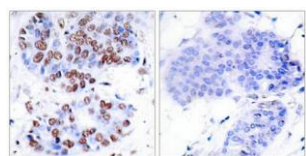
---



Western blot analysis of extracts from HeLa cells using NFκB-p65(Ab-276) Antibody and the same antibody preincubated with blocking peptide.



Immunofluorescence staining of methanol-fixed HeLa cells using NFκB-p65(Ab-276) Antibody.



Immunohistochemical analysis of paraffin-embedded human breast carcinoma tissue using NFκB-p65(Ab-276) Antibody(left) or the same antibody preincubated with blocking peptide(right).