

# NFKB2 (Ab-866) Antibody



PACO23536

---

## Product Information

**Size:**

100ul

**Reactivity:**

Human, Mouse, Rat

**Source:**

Rabbit

**Isotype:**

IgG

**Applications:**

ELISA, WB, IHC, IF

**Recommended dilutions:**

ELISA:1:2000-1:10000, WB:1:500-1:1000,  
IHC:1:50-1:200, IF:1:100-1:200

**Protein Background:****Gene ID:**

NFKB2

**Uniprot**

Q00653

**Synonyms:**

DNA-binding factor KBF2; H2TF1; Lymphocyte translocation chromosome 10; Lyt10; NFKB2

**Immunogen:**

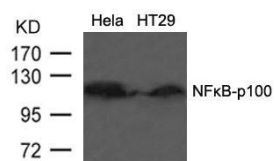
Peptide sequence around aa.864~868 (E-D-S-A-Y) derived from Human NFkB-p100.

**Storage:**

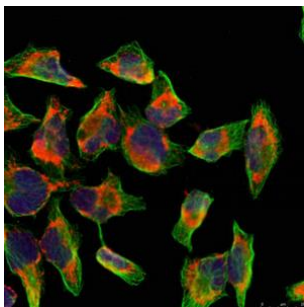
Supplied at 1.0mg/mL in phosphate buffered saline (without Mg<sup>2+</sup> and Ca<sup>2+</sup>), pH 7.4, 150mM NaCl, 0.02% sodium azide and 50% glycerol.

## Product Images

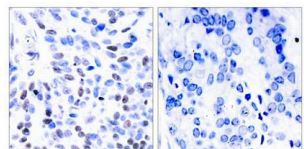
---



Western blot analysis of extracts from HT29 cells using NFkB-p100(Ab-866) Antibody.



Immunofluorescence staining of methanol-fixed HeLa cells using NFkB-p100(Ab-866) Antibody.



Immunohistochemical analysis of paraffin-embedded human breast carcinoma tissue using NFkB-p100(Ab-866) Antibody(left) or the same antibody preincubated with blocking peptide(right).