

GATA1 (Ab-142) Antibody



PACO23542

Product Information

Size:

100ul

Reactivity:

Human, Mouse, Rat

Source:

Rabbit

Isotype:

IgG

Applications:

ELISA, WB, IHC, IF

Recommended dilutions:

ELISA:1:2000-1:10000, WB:1:500-1:1000,
IHC:1:50-1:200, IF:1:100-1:200

Protein Background:

GATA1 encodes a protein which belongs to the GATA family of transcription factors. The protein plays an important role in erythroid development by regulating the switch of fetal hemoglobin to adult hemoglobin. Mutations in this gene have been associated with X-linked dyserythropoietic anemia and thrombocytopenia.

Gene ID:

GATA1

Uniprot

P15976

Synonyms:

GAT1; GATA1; GF-1; NF-E1;

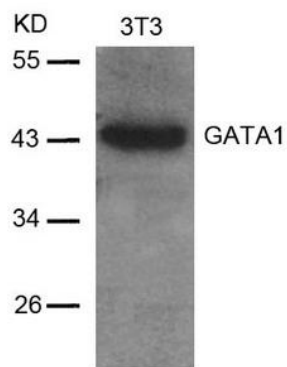
Immunogen:

Peptide sequence around aa.140~144 (R-L-S-P-D) derived from Human GATA1.

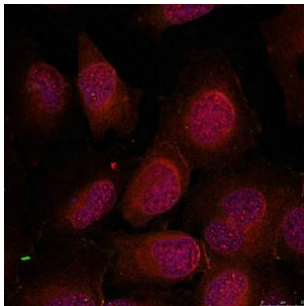
Storage:

Supplied at 1.0mg/mL in phosphate buffered saline (without Mg²⁺ and Ca²⁺), pH 7.4, 150mM NaCl, 0.02% sodium azide and 50% glycerol.

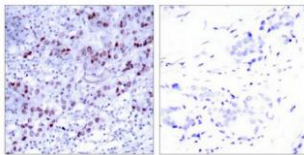
Product Images



Western blot analysis of extracts from 3T3 cells using GATA1(Ab-142) Antibody.



Immunofluorescence staining of methanol-fixed HeLa cells using GATA1(Ab-142) Antibody.



Immunohistochemical analysis of paraffin-embedded human breast carcinoma tissue using GATA1(Ab-142) Antibody(left) or the same antibody preincubated with blocking peptide(right).