

ERBB2 (Ab-1221/1222) Antibody



PACO23547

Product Information

Size:

100ul

Reactivity:

Human

Source:

Rabbit

Isotype:

IgG

Applications:

ELISA, WB, IHC, IF

Recommended dilutions:

ELISA:1:2000-1:10000, WB:1:500-1:1000,
IHC:1:50-1:200, IF:1:100-1:200

Protein Background:

Essential component of a neuregulin-receptor complex, although neuregulins do not interact with it alone. GP30 is a potential ligand for this receptor. Not activated by EGF, TGF- α and amphiregulin.

Gene ID:

ERBB2

Uniprot

P04626

Synonyms:

C-erbB-2; ErbB2;

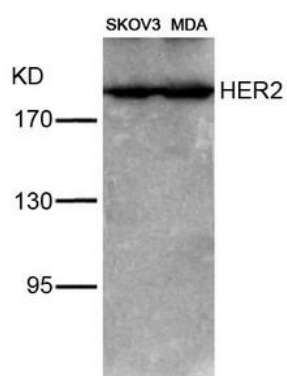
Immunogen:

Peptide sequence around aa.1219~1223/1220~1224 (N-L-Y-Y -W) derived from Human HER2.

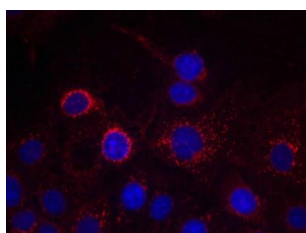
Storage:

Supplied at 1.0mg/mL in phosphate buffered saline (without Mg²⁺ and Ca²⁺), pH 7.4, 150mM NaCl, 0.02% sodium azide and 50% glycerol.

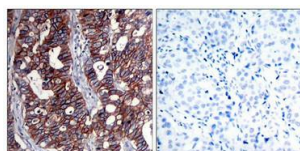
Product Images



Western blot analysis of extracts from SKOV3 and MDA cells using HER2(Ab-1221/1222) Antibody.



Immunofluorescence staining of methanol-fixed MCF cells using HER2(Ab-1221/1222) Antibody.



Immunohistochemical analysis of paraffin-embedded human breast carcinoma tissue using HER2(Ab-1221/1222) Antibody(left) or the same antibody preincubated with blocking peptide(right).