

# ERBB2 (Ab-1248) Antibody



PACO23548

---

## Product Information

**Size:**

100ul

**Reactivity:**

Human, Mouse, Rat

**Source:**

Rabbit

**Isotype:**

IgG

**Applications:**

ELISA, WB, IHC, IF

**Recommended dilutions:**

ELISA:1:2000-1:10000, WB:1:500-1:1000,  
IHC:1:50-1:200, IF:1:100-1:200

**Protein Background:**

Essential component of a neuregulin-receptor complex, although neuregulins do not interact with it alone. GP30 is a potential ligand for this receptor. Not activated by EGF, TGF- $\alpha$  and amphiregulin.

**Gene ID:**

ERBB2

**Uniprot**

P04626

**Synonyms:**

C-erbB-2; ErbB2;

**Immunogen:**

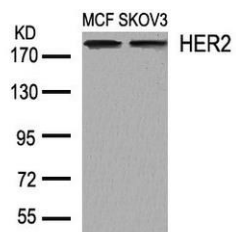
Peptide sequence around aa. 1246~1250 (P-E-Y-L-G) derived from Human HER2.

**Storage:**

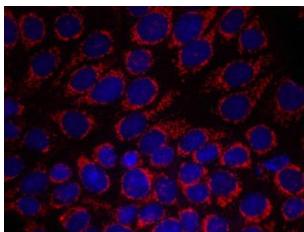
Supplied at 1.0mg/mL in phosphate buffered saline (without Mg<sup>2+</sup> and Ca<sup>2+</sup>), pH 7.4, 150mM NaCl, 0.02% sodium azide and 50% glycerol.

## Product Images

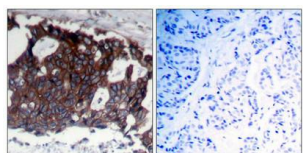
---



Western blot analysis of extracts from MCF and SKOV3 cells using HER2(Ab-1248) Antibody.



Immunofluorescence staining of methanol-fixed MCF7 cells using HER2(Ab-1248) Antibody.



Immunohistochemical analysis of paraffin-embedded human breast carcinoma tissue using HER2(Ab-1248) Antibody(left) or the same antibody preincubated with blocking peptide(right).