

# CDC25C (Ab-216) Antibody



PACO23559

---

## Product Information

**Size:**

100ul

**Reactivity:**

Human

**Source:**

Rabbit

**Isotype:**

IgG

**Applications:**

ELISA, WB, IHC, IF

**Recommended dilutions:**

ELISA:1:2000-1:10000, WB:1:500-1:1000,  
IHC:1:50-1:200, IF:1:100-1:200

**Protein Background:**

cdc25C is highly conserved during evolution and it plays a key role in the regulation of cell division. The encoded protein is a tyrosine phosphatase and belongs to the Cdc25 phosphatase family. It directs dephosphorylation of cyclin B-bound CDC2 and triggers entry into mitosis. It is also thought to suppress p53-induced growth arrest. Multiple alternatively spliced transcript variants of this gene have been described, however, the full-length nature of many of them is not known.

**Gene ID:**

CDC25C

**Uniprot**

P30307

**Synonyms:**

CDC25M1; MPIP3;

**Immunogen:**

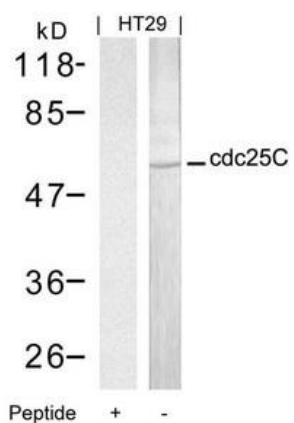
Peptide sequence around aa.214~218 (S-P-S-M-P) derived from Human cdc25C.

**Storage:**

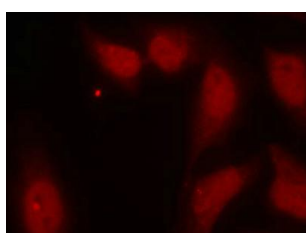
Supplied at 1.0mg/mL in phosphate buffered saline (without Mg<sup>2+</sup> and Ca<sup>2+</sup>), pH 7.4, 150mM NaCl, 0.02% sodium azide and 50% glycerol.

## Product Images

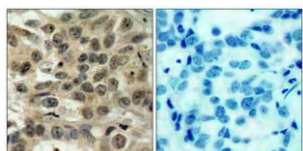
---



Western blot analysis of extracts from HT29 cells using cdc25C(Ab-216) Antibody and the same antibody preincubated with blocking peptide.



Immunofluorescence staining of methanol-fixed HeLa cells using cdc25C(Ab-216) Antibody.



Immunohistochemical analysis of paraffin-embedded human breast carcinoma tissue using cdc25C(Ab-216) Antibody(left) or the same antibody preincubated with blocking peptide(right).