

# MAP2K6 (Ab-207) Antibody



PACO23561

---

## Product Information

**Size:**

100ul

**Reactivity:**

Human, Rat

**Source:**

Rabbit

**Isotype:**

IgG

**Applications:**

ELISA, WB, IHC, IF

**Recommended dilutions:**

ELISA:1:2000-1:10000, WB:1:500-1:1000,  
IHC:1:50-1:200, IF:1:100-1:200

**Protein Background:****Gene ID:**

MAP2K6

**Uniprot**

P52564

**Synonyms:**

MAP kinase kinase 6; MAP2K6; MAPK/ERK kinase 6; MAPKK 6; MEK6

**Immunogen:**

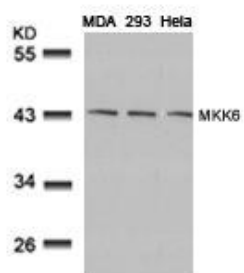
Peptide sequence around aa.205~209 (V-D-S-V-A) derived from Human MKK6.

**Storage:**

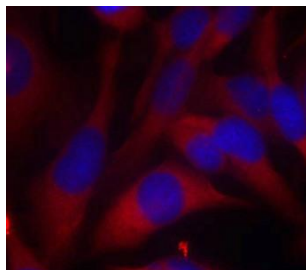
Supplied at 1.0mg/mL in phosphate buffered saline (without Mg<sup>2+</sup> and Ca<sup>2+</sup>), pH 7.4, 150mM NaCl, 0.02% sodium azide and 50% glycerol.

## Product Images

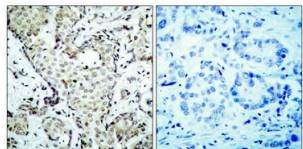
---



Western blot analysis of extracts from MDA, 293 and HeLa cells using MKK6(Ab-207) Antibody.



Immunofluorescence staining of methanol-fixed HeLa cells using MKK6(Ab-207) Antibody.



Immunohistochemical analysis of paraffin-embedded human breast carcinoma tissue using MKK6(Ab-207) Antibody(left) or the same antibody preincubated with blocking peptide(right).