

# PAK1/PAK2/PAK3 (Ab-423/402/421) Antibody



PACO23563

---

## Product Information

**Size:**

100ul

**Reactivity:**

Human, Mouse, Rat

**Source:**

Rabbit

**Isotype:**

IgG

**Applications:**

ELISA, WB, IHC, IF

**Recommended dilutions:**

ELISA:1:2000-1:10000, WB:1:500-1:1000,  
IHC:1:50-1:200, IF:1:100-1:200

**Protein Background:**

The activated kinase acts on a variety of targets. Likely to be the GTPase effector that links the Rho-related GTPases to the JNK MAP kinase pathway. Activated by CDC42 and RAC1. Involved in dissolution of stress fibers and reorganization of focal complexes. Involved in regulation of microtubule biogenesis through phosphorylation of TBCB. Activity is inhibited in cells undergoing apoptosis, potentially due to binding of CDC2L1 and CDC2L2.

**Gene ID:**

PAK1/PAK2/PAK3

**Uniprot**

Q13153/Q13177/O75914

**Synonyms:**

p21-activated kinase 1; PAK-1; p65-PAK; Alpha-PAK;

**Immunogen:**

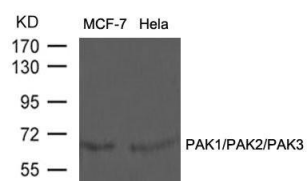
Peptide sequence around aa.421~425/400~404/419~423 (R-S-T-M-V) derived from Human PAK1/PAK2/PAK3.

**Storage:**

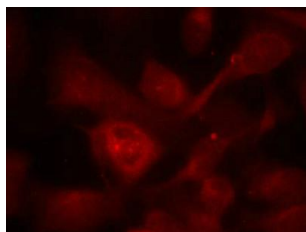
Supplied at 1.0mg/mL in phosphate buffered saline (without Mg<sup>2+</sup> and Ca<sup>2+</sup>), pH 7.4, 150mM NaCl, 0.02% sodium azide and 50% glycerol.

## Product Images

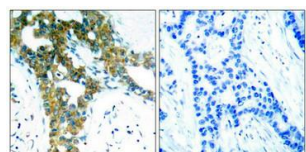
---



Western blot analysis of extracts from MCF-7 and HeLa cells using PAK1/PAK2/PAK3(Ab-423/402/421) Antibody.



Immunofluorescence staining of methanol-fixed HeLa cells using PAK1/PAK2/PAK3(Ab-423/402/421) Antibody.



Immunohistochemical analysis of paraffin-embedded human breast carcinoma tissue using PAK1/PAK2/PAK3(Ab-423/402/421) Antibody(left) or the same antibody preincubated with blocking peptide(right).