

MTOR (Ab-2448) Antibody



PACO23569

Product Information

Size:

100ul

Reactivity:

Human, Mouse, Rat

Source:

Rabbit

Isotype:

IgG

Applications:

ELISA, WB, IHC, IF

Recommended dilutions:

ELISA:1:2000-1:10000, WB:1:500-1:1000,
IHC:1:50-1:200, IF:1:100-1:200

Protein Background:**Gene ID:**

MTOR

Uniprot

P42345

Synonyms:

FRAP; FRAP1; FRAP2; RAFT1;

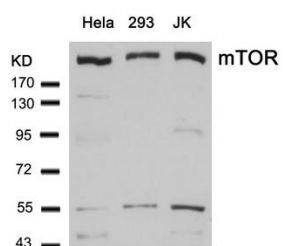
Immunogen:

Peptide sequence around aa. 2446~2450 (T-D-S-Y-S) derived from Human mTOR.

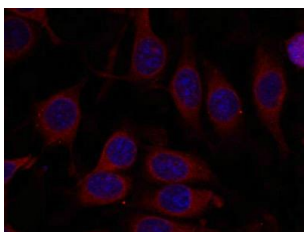
Storage:

Supplied at 1.0mg/mL in phosphate buffered saline (without Mg²⁺ and Ca²⁺), pH 7.4, 150mM NaCl, 0.02% sodium azide and 50% glycerol.

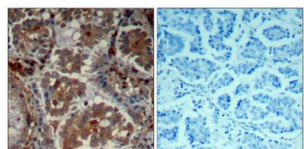
Product Images



Western blot analysis of extracts from HeLa, 293 and JK cells using mTOR(Ab-2448) Antibody.



Immunofluorescence staining of methanol-fixed MCF7 cells using mTOR(Ab-2448) Antibody.



Immunohistochemical analysis of paraffin-embedded human Lung carcinoma tissue using mTOR(Ab-2448) Antibody(left) or the same antibody preincubated with blocking peptide(right).