

STMN1 (Ab-25) Antibody



PACO23570

Product Information

Size:

100ul

Reactivity:

Human, Mouse, Rat

Source:

Rabbit

Isotype:

IgG

Applications:

ELISA, WB, IHC, IF

Recommended dilutions:

ELISA:1:2000-1:10000, WB:1:500-1:1000,
IHC:1:50-1:200, IF:1:100-1:200

Protein Background:

Involved in the regulation of the microtubule (MT) filament system by destabilizing microtubules. Prevents assembly and promotes disassembly of microtubules. Phosphorylation at Ser-16 may be required for axon formation during neurogenesis. Involved in the control of the learned and innate fear.

Gene ID:

STMN1

Uniprot

P16949

Synonyms:

STMN1; STN1; stathmin

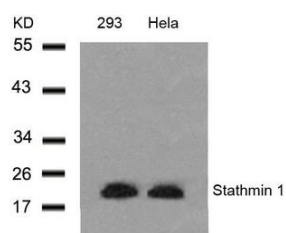
Immunogen:

Peptide sequence around aa. 23~27 (I-L-S-P-R) derived from Human Stathmin 1.

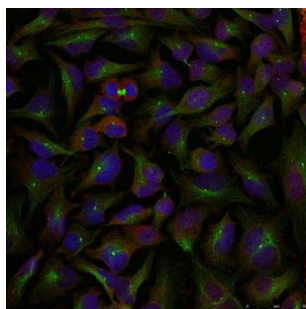
Storage:

Supplied at 1.0mg/mL in phosphate buffered saline (without Mg²⁺ and Ca²⁺), pH 7.4, 150mM NaCl, 0.02% sodium azide and 50% glycerol.

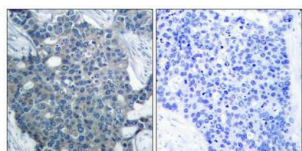
Product Images



Western blot analysis of extracts from 293 and HeLa cells using Stathmin 1(Ab-25) Antibody.



Immunofluorescence staining of methanol-fixed HeLa cells using Stathmin 1(Ab-25) Antibody.



Immunohistochemical analysis of paraffin-embedded human breast carcinoma tissue using Stathmin 1(Ab-25) Antibody(left) or the same antibody preincubated with blocking peptide(right).