

RPS6 (Ab-235) Antibody



PACO23572

Product Information

Size:

100ul

Reactivity:

Human, Mouse, Rat

Source:

Rabbit

Isotype:

IgG

Applications:

ELISA, WB, IHC, IF

Recommended dilutions:

ELISA:1:2000-1:10000, WB:1:500-1:1000,
IHC:1:50-1:200, IF:1:100-1:200

Protein Background:

May play an important role in controlling cell growth and proliferation through the selective translation of particular classes of mRNA.

Gene ID:

RPS6

Uniprot

P62753

Synonyms:

NP33; RPS6; RS6

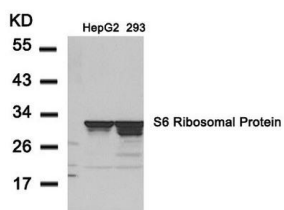
Immunogen:

Peptide sequence around aa. 233~237 (R-L-S-S-L) derived from Human S6 Ribosomal Protein.

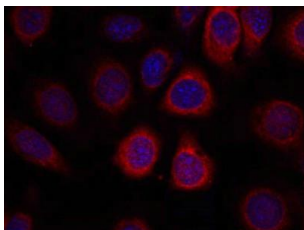
Storage:

Supplied at 1.0mg/mL in phosphate buffered saline (without Mg²⁺ and Ca²⁺), pH 7.4, 150mM NaCl, 0.02% sodium azide and 50% glycerol.

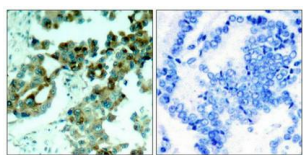
Product Images



Western blot analysis of extracts from HepG2 and 293 cells using S6 Ribosomal Protein(Ab-235) Antibody.



Immunofluorescence staining of methanol-fixed MCF7 cells using S6 Ribosomal Protein(Ab-235) Antibody.



Immunohistochemical analysis of paraffin-embedded human lung carcinoma tissue using S6 Ribosomal Protein(Ab-235) Antibody(left) or the same antibody preincubated with blocking peptide(right).