

# PRKCD (Ab-645) Antibody



PACO23583

---

## Product Information

**Size:**

100ul

**Reactivity:**

Human, Mouse, Rat

**Source:**

Rabbit

**Isotype:**

IgG

**Applications:**

ELISA, WB, IHC, IF

**Recommended dilutions:**

ELISA:1:2000-1:10000, WB:1:500-1:1000,  
IHC:1:50-1:200, IF:1:100-1:200

**Protein Background:**

This is calcium-independent, phospholipid-dependent, serine- and threonine-specific enzyme. PKC $\delta$  is activated by diacylglycerol, which in turn phosphorylates a range of cellular proteins. PKC $\delta$  also serves as the receptor for phorbol esters, a class of tumor promoters. May play a role in antigen-dependent control of B-cell function. Phosphorylates MUC1 in the C-terminal and regulates the interaction between MUC1 and beta-catenin.

**Gene ID:**

PRKCD

**Uniprot**

Q05655

**Synonyms:**

nPKC-delta

**Immunogen:**

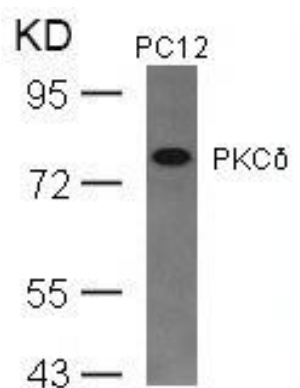
Peptide sequence around aa. 643~647 (R-L-S-Y-S) derived from Human PKC $\delta$ .

**Storage:**

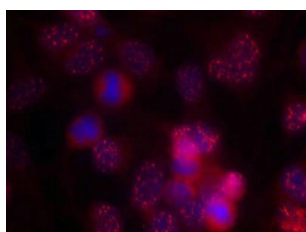
Supplied at 1.0mg/mL in phosphate buffered saline (without Mg<sup>2+</sup> and Ca<sup>2+</sup>), pH 7.4, 150mM NaCl, 0.02% sodium azide and 50% glycerol.

## Product Images

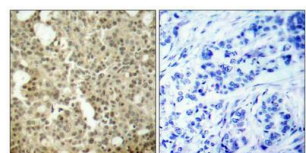
---



Western blot analysis of extracts from PC12 cells using PKCδ(Ab-645) Antibody.



Immunofluorescence staining of methanol-fixed HeLa cells using PKCδ(Ab-645) Antibody.



Immunohistochemical analysis of paraffin-embedded human breast carcinoma tissue using PKCδ(Ab-645) Antibody(left) or the same antibody preincubated with blocking peptide(right).