

HSP90AB1 (Ab-254) Antibody



PACO23585

Product Information

Size:

100ul

Reactivity:

Human, Mouse, Rat

Source:

Rabbit

Isotype:

IgG

Applications:

ELISA, WB, IHC, IF

Recommended dilutions:

ELISA:1:2000-1:10000, WB:1:500-1:1000,
IHC:1:50-1:200, IF:1:100-1:200

Protein Background:

Molecular chaperone. Has ATPase activity.

Gene ID:

HSP90AB1

Uniprot

P08238

Synonyms:

HSP 84

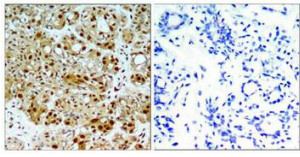
Immunogen:

Peptide sequence around aa. 252~256 (V-G-S-D-E) derived from Human HSP90B.

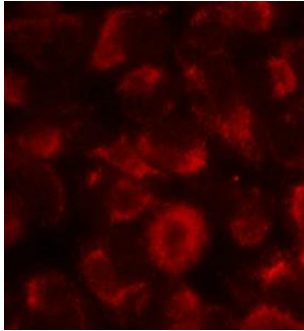
Storage:

Supplied at 1.0mg/mL in phosphate buffered saline (without Mg²⁺ and Ca²⁺), pH 7.4,
150mM NaCl, 0.02% sodium azide and 50% glycerol.

Product Images



Immunohistochemical analysis of paraffin-embedded human breast carcinoma tissue using HSP90B(Ab-254) Antibody(left) or the same antibody preincubated with blocking peptide(right).



Immunofluorescence staining of methanol-fixed HeLa cells showing cytoplasmic staining using HSP90B(Ab-254) Antibody.