

NFKB2 (Ab-872) Antibody



PACO23586

Product Information

Size:

100ul

Reactivity:

Human, Mouse

Source:

Rabbit

Isotype:

IgG

Applications:

ELISA, WB, IHC, IF

Recommended dilutions:

ELISA:1:2000-1:10000, WB:1:500-1:1000,
IHC:1:50-1:200, IF:1:100-1:200

Protein Background:**Gene ID:**

NFKB2

Uniprot

Q00653

Synonyms:

DNA-binding factor KBF2; H2TF1; Lymphocyte translocation chromosome 10; Lyt10; NFKB2

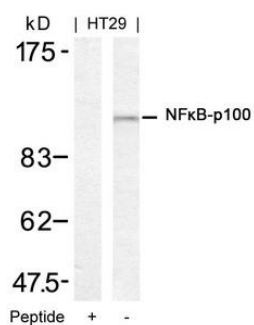
Immunogen:

Peptide sequence around aa.870~874 (S-Q-S-V-E) derived from Human NFkB-p100.

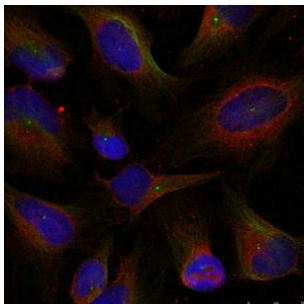
Storage:

Supplied at 1.0mg/mL in phosphate buffered saline (without Mg²⁺ and Ca²⁺), pH 7.4, 150mM NaCl, 0.02% sodium azide and 50% glycerol.

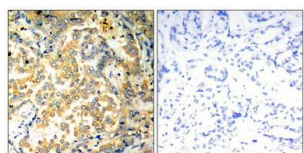
Product Images



Western blot analysis of extracts from HT29 cells using NFkB-p100(Ab-872) Antibody and the same antibody preincubated with blocking peptide.



Immunofluorescence staining of methanol-fixed HeLa cells using NFkB-p100(Ab-872) Antibody.



Immunohistochemical analysis of paraffin-embedded human lung carcinoma tissue using NFkB-p100/p52(Ab-872) Antibody(left) or the same antibody preincubated with blocking peptide(right).