

**HDAC4/HDAC5/HDAC9 (Ab-246/259/220)
Antibody
PACO23595**



Product Information

Size:

100ul

Reactivity:

Human, Mouse

Source:

Rabbit

Isotype:

IgG

Applications:

ELISA, WB, IHC, IF

Recommended dilutions:

ELISA:1:2000-1:10000, WB:1:500-1:1000,
IHC:1:50-1:200, IF:1:100-1:200

Protein Background:

Gene ID:

HDAC4/HDAC5/HDAC9

Uniprot

P56524/Q9UQL6/Q9UKV0

Synonyms:

HD4/HD5/HD9

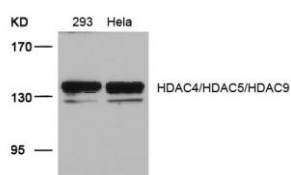
Immunogen:

Peptide sequence around aa.244~248/257~261/218~222 (T-A-S-E-P) derived from Human HDAC4/HDAC5/HDAC9.

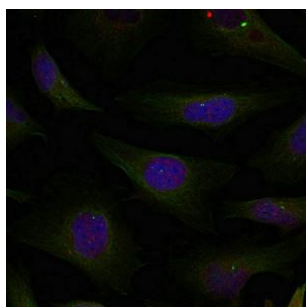
Storage:

Supplied at 1.0mg/mL in phosphate buffered saline (without Mg²⁺ and Ca²⁺), pH 7.4, 150mM NaCl, 0.02% sodium azide and 50% glycerol.

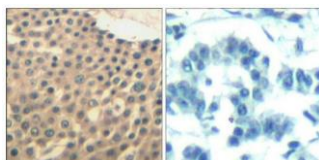
Product Images



Western blot analysis of extracts from 293 and HeLa cells using HDAC4/HDAC5/HDAC9(Ab-246/259/220) Antibody.



Immunofluorescence staining of methanol-fixed HeLa cells using HDAC4/HDAC5/HDAC9(Ab-246/259/220) Antibody.



Immunohistochemical analysis of paraffin-embedded human lung carcinoma tissue using HDAC4/HDAC5/HDAC9(Ab-246/259/220) Antibody(left) or the same antibody preincubated with blocking peptide(right).