

MDM2 (Ab-166) Antibody



PACO23598

Product Information

Size:

100ul

Reactivity:

Human, Mouse, Rat

Source:

Rabbit

Isotype:

IgG

Applications:

ELISA, WB, IHC, IF

Recommended dilutions:

ELISA:1:2000-1:10000, WB:1:500-1:1000,
IHC:1:50-1:200, IF:1:100-1:200

Protein Background:**Gene ID:**

MDM2

Uniprot

Q00987

Synonyms:

HDMX, hdm2

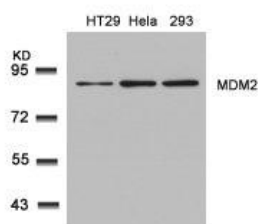
Immunogen:

Peptide sequence around aa.164~168 (A-I-S-E-T) derived from Human MDM2.

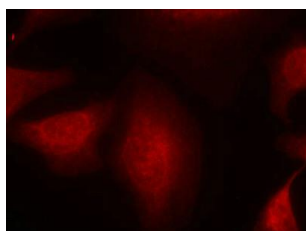
Storage:

Supplied at 1.0mg/mL in phosphate buffered saline (without Mg²⁺ and Ca²⁺), pH 7.4, 150mM NaCl, 0.02% sodium azide and 50% glycerol.

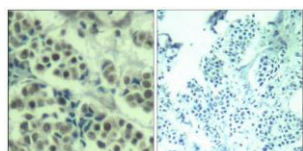
Product Images



Western blot analysis of extracts from HT29, HeLa and 293 cells using MDM2(Ab-166) Antibody.



Immunofluorescence staining of methanol-fixed HeLa cells using MDM2(Ab-166) Antibody.



Immunohistochemical analysis of paraffin-embedded human breast carcinoma tissue using MDM2(Ab-166) Antibody(left) or the same antibody preincubated with blocking peptide(right).