

STAT3 (Ab-705) Antibody



PACO23599

Product Information

Size:

100ul

Reactivity:

Human, Mouse, Rat

Source:

Rabbit

Isotype:

IgG

Applications:

ELISA, WB, IHC, IF

Recommended dilutions:

ELISA:1:2000-1:10000, WB:1:500-1:1000,
IHC:1:50-1:200, IF:1:100-1:200

Protein Background:

Transcription factor that binds to the interleukin-6 (IL-6)-responsive elements identified in the promoters of various acute-phase protein genes. Activated by IL31 through IL31RA.

Gene ID:

STAT3

Uniprot

P40763

Synonyms:

APRF; Acute-phase response factor; HIES

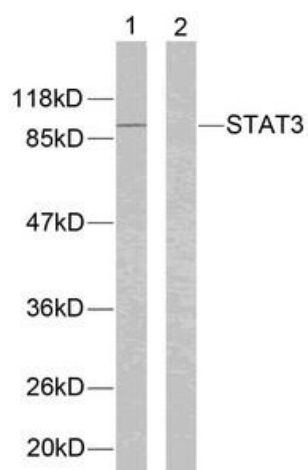
Immunogen:

Peptide sequence around aa.703~707(A-P-Y-L-K) derived from Human STAT3.

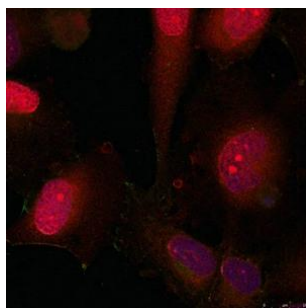
Storage:

Supplied at 1.0mg/mL in phosphate buffered saline (without Mg²⁺ and Ca²⁺), pH 7.4, 150mM NaCl, 0.02% sodium azide and 50% glycerol.

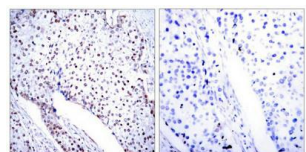
Product Images



Western blot analysis of extracts from HeLa cells using STAT3(Ab-705) Antibody(lane 1).



Immunofluorescence staining of methanol-fixed HeLa cells using STAT3(Ab-705) antibody.



Immunohistochemical analysis of paraffin-embedded human breast carcinoma tissue using STAT3(Ab-705) antibody.